

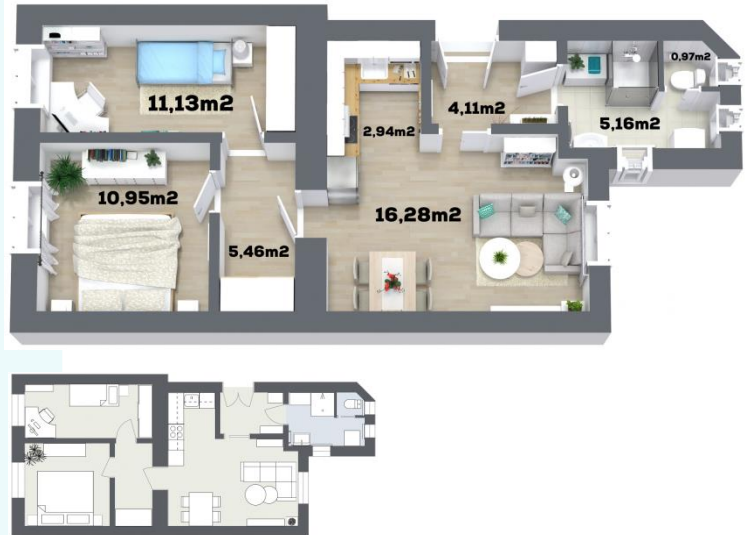
# TÁBORSKÁ, PRAGUE 4 – NUSLE

Purchase price  
**CZK 5.565.000 inc. VAT**

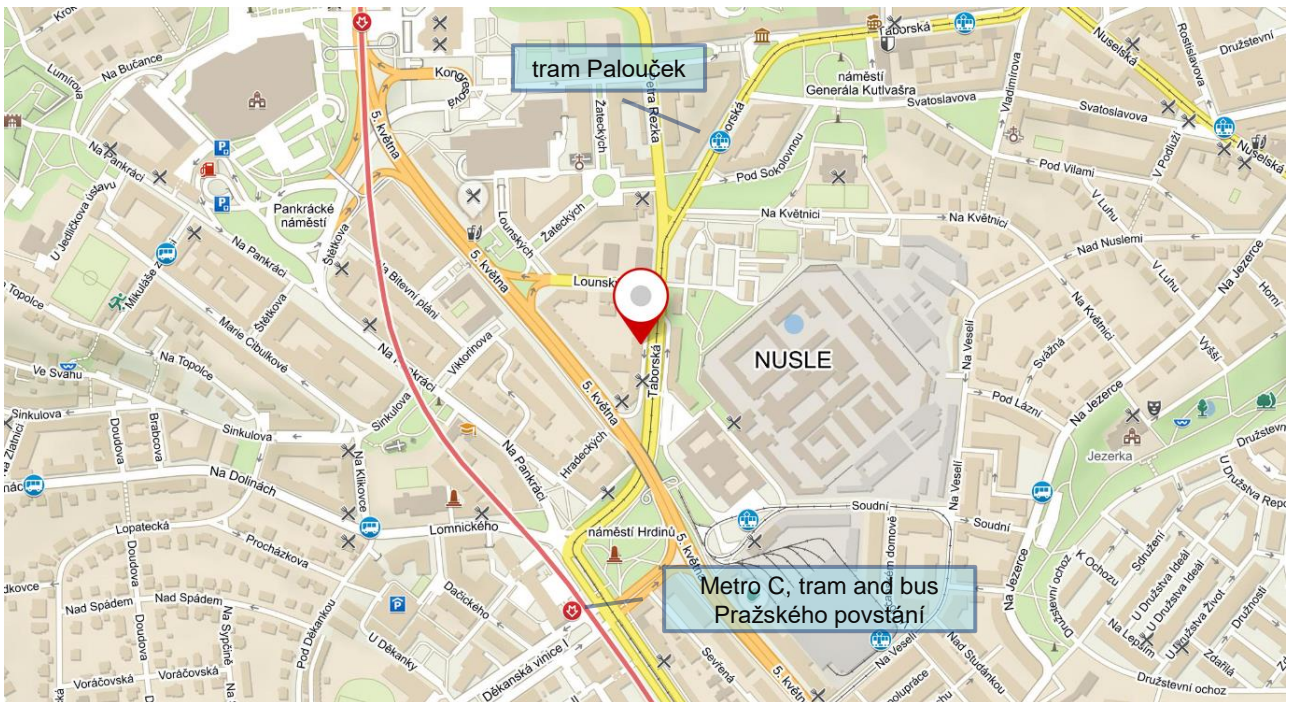
Layout  
**two-bedroom (3+kk)**

Floor area  
**53,5 m<sup>2</sup>**

ADDRESS	Táborská 751/9
FLOOR	1 th
BASEMENT	4 m <sup>2</sup>
GARAGE	no
BALCONY	no
STATUS	vacant
MOVE IN	June 2020



## LOCATION



# TÁBORSKÁ, PRAGUE 4 – NUSLE

Purchase price  
**CZK 5.565.000 inc. VAT**

Layout  
**two-bedroom (3+kk)**

Floor area  
**53,5 m<sup>2</sup>**

## DESCRIPTION

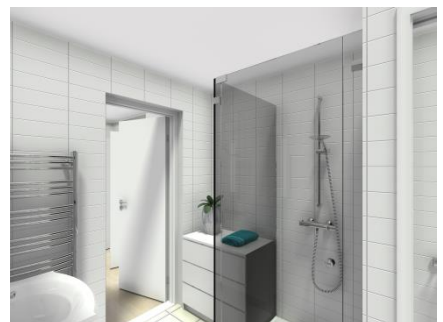
We offer an two-bedroom apartment located in Táborská street.

The apartment will be completely reconstructed and ready to move in during June 2020. During the reconstruction we use quality materials. A complete list of equipment and materials will be sent to your e-mail on request.

Floor area is 53,5 m<sup>2</sup>. The apartment is located on the 1 th floor.

The apartment is offered without furniture. There will be a new kitchen, refrigerator, electric oven, induction hob, carbon hood, dishwasher, washing machine with front loading. All appliances are brand Elektrolux. There will be vinyl floors in the rooms, tiles in the bathroom.

## VISUALIZATION



*The visualizations are illustration of the future appearance of the apartment. Subject to change.*

# TÁBORSKÁ, PRAGUE 4 – NUSLE

Purchase price  
**CZK 5.565.000 inc. VAT**

Layout  
**two-bedroom (3+kk)**

Floor area  
**53,5 m<sup>2</sup>**

## POINTS OF INTEREST

The apartment is located in a popular location, near the center of Prague and at the same time represents quiet living. A short walk will take you to Vysehrad or Jezerka Park.

Location offers all civic amenities. Nearby you will find Tesco, cafes and restaurants, the Arkády Pankrác shopping center and administrative buildings in Pankrác are 15 minutes walking or 1 metro stop.

Kindergarten and elementary school are located nearby.

The location of the apartment is within easy reach of the city center - 200 m from the apartment there is an entrance to the metro station Pražského povstání, tram and bus stop. The advantage is a direct connection to the street 5. května and Nuselský Bridge.



# TÁBORSKÁ, PRAGUE 4 – NUSLE

Purchase price  
**CZK 5.565.000 inc. VAT**

Layout  
**two-bedroom (3+kk)**

Floor area  
**53,5 m<sup>2</sup>**

## MORE INFORMATION

Detailed specifications of the apartment and important legal documents can be found in the appendix of this brochure:

- Technical specifications of the apartment
- Standard equipment of the apartment
- Reservation agreement
- Purchase contract

---

## CONTACT US

Sales specialist  
Martin Zelinka  
+420 777 756 974  
[zelinka@palatinumcampus.cz](mailto:zelinka@palatinumcampus.cz)

Sales office  
Na Plzeňce 2, 150 00, Praha 5  
+420 777 023 535  
[info@palatinum-investicni.cz](mailto:info@palatinum-investicni.cz)